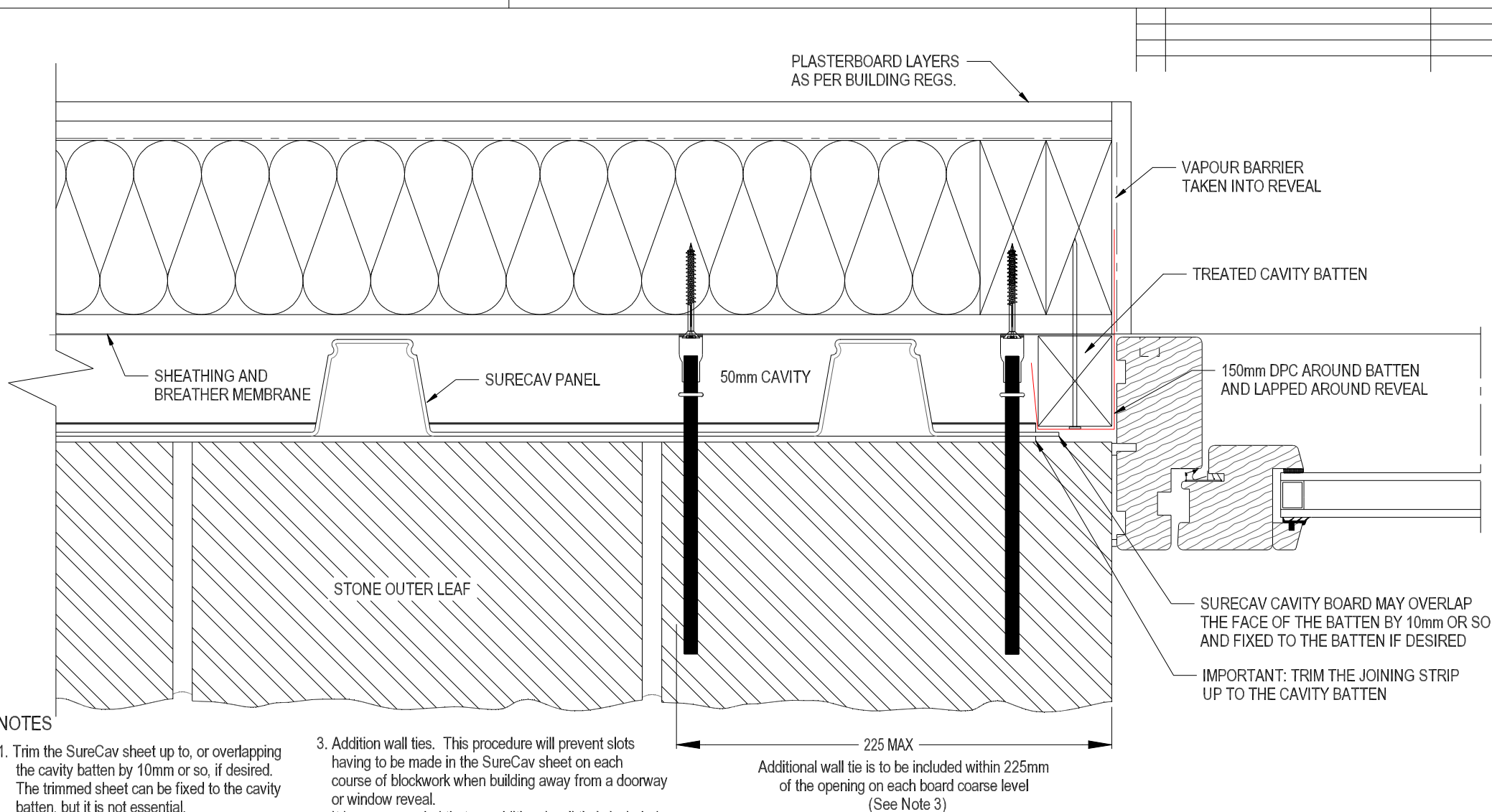


## SURECAV SPACER SYSTEM

COPYRIGHT © 2015 SURECAV LTD.

FOR MORE INFORMATION VISIT [WWW.SURECAV.CO.UK](http://WWW.SURECAV.CO.UK)

## NOTES

1. Trim the SureCav sheet up to, or overlapping the cavity batten by 10mm or so, if desired. The trimmed sheet can be fixed to the cavity batten, but it is not essential.
2. The SureCav joining strip must be trimmed to meet the cavity batten to ensure the overlapping part of the sheet does not interfere with the external stonework.
3. Addition wall ties. This procedure will prevent slots having to be made in the SureCav sheet on each course of blockwork when building away from a doorway or window reveal. It is recommended that an additional wall tie is included within 225mm of the opening on each board coarse level to satisfy the structural requirements. The ties should then be fitted every 450mm vertically coinciding with the joint in the SureCav sheet.

UNITS	DO NOT SCALE	PROJECTION	SURECAV DETAIL INCORPORATING ANCON TEPLO -L- TIES
DIMENSIONS mm UNLESS OTHERWISE STATED	THIS IS A CAD DRAWING AND MUST NOT BE CHANGED MANUALLY		

TITLE

SURECAV DETAIL TO SHOW ADDITIONAL TIE  
WHEN ADJACENT TO DOOR OR WINDOW OPENING